



## REGIONAL SPECIALISED METEOROLOGICAL CENTRE -TROPICAL CYCLONES, NEW DELHI TROPICAL WEATHER OUTLOOK

**DEMS-RSMC TROPICAL CYCLONES NEW DELHI DATED 08.08.2025**

**TROPICAL WEATHER OUTLOOK FOR THE NORTH INDIAN OCEAN (THE BAY OF BENGAL AND THE ARABIAN SEA) VALID FOR THE NEXT 168 HOURS ISSUED AT 0600 UTC OF 08.08.2025 BASED ON 0300 UTC OF 08.08.2025.**

### **BAY OF BENGAL:**

Yesterday's upper air cyclonic circulation over southwest Bay of Bengal off North Tamil Nadu coasts now lay over south coastal Andhra Pradesh between 1.5 & 3.1 km above mean sea level at 0300 UTC of today, the 08<sup>th</sup> August, 2025.

A fresh upper air cyclonic circulation lay over Bangladesh & west Bengal coasts and adjoining areas of northwest Bay of Bengal between 3.1 & 5.8 km above mean sea level tilting southwestwards with height at 0300 UTC of today, the 08<sup>th</sup> August, 2025.

A low pressure area is likely to form over northwest & adjoining westcentral Bay of Bengal around 13th August, 2025.

Scattered low and medium clouds with embedded intense to very intense convection lay over Bay of Bengal, Andaman Sea, Arakan coast & Tenasserim coast.

### **\*PROBABILITY OF CYCLOGENESIS (FORMATION OF DEPRESSION) DURING NEXT 168 HRS:**

24 HOURS	24-48 HOURS	48-72 HOURS	72-96 HOURS	96-120 HOURS	120-144 HOURS	144-168 HOURS
NIL	NIL	NIL	NIL	NIL	NIL	NIL

**\*NOTE: EVERY 24HR FORECAST IS VALID UPTO 0300 UTC (0830 IST) OF NEXT DAY**

### **ARABIAN SEA:**

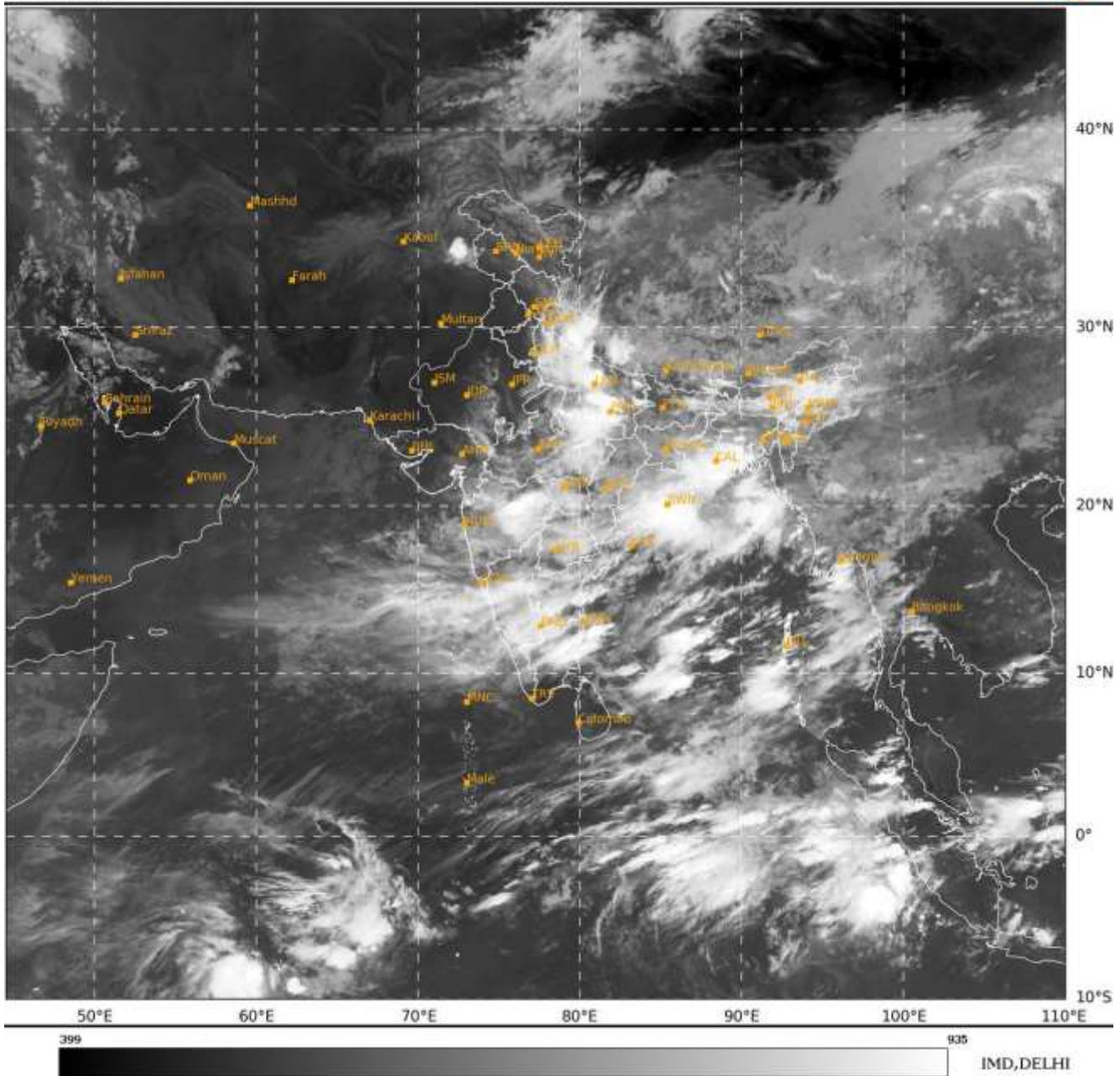
Scattered low and medium clouds with embedded moderate to intense convection lay over eastcentral & southeast Arabian Sea off Maharashtra-Goa-Karnataka-Kerala coasts and weak to moderate convection lay over Lakshadweep islands area, rest Arabian Sea, Maldives & Comorin area.

### **\*PROBABILITY OF CYCLOGENESIS (FORMATION OF DEPRESSION) DURING NEXT 168 HRS:**

24 HOURS	24-48 HOURS	48-72 HOURS	72-96 HOURS	96-120 HOURS	120-144 HOURS	144-168 HOURS
NIL	NIL	NIL	NIL	NIL	NIL	NIL

**\*NOTE: EVERY 24HR FORECAST IS VALID UPTO 0300 UTC (0830 IST) OF NEXT DAY**

**REMARKS: NIL**



Cloud distribution: (a) Isolated: <25%, Scattered:25-50%, Broken: 51-75%, Solid:>75%, Convection Intensity: (a) Weak: Cloud Top Temperature(CTT)>-25°C,(b)Moderate:CTT:-25°Cto-40°C,(c)Intense:CTT: -41°Cto -70°Cand(d)Very Intense:Less than -70°C  
PROBABILITY OF CYCLOGENESIS (FORMATION OF DEPRESSION): NIL:0%, LOW:1-33%, MODERATE:34-66% AND HIGH:67-100%  
This is a guidance Bulletin for WMO/ESCAP Panel Member countries. Visit respective National websites for Country specific Bulletins